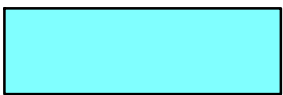

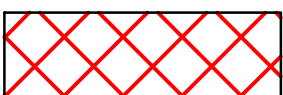

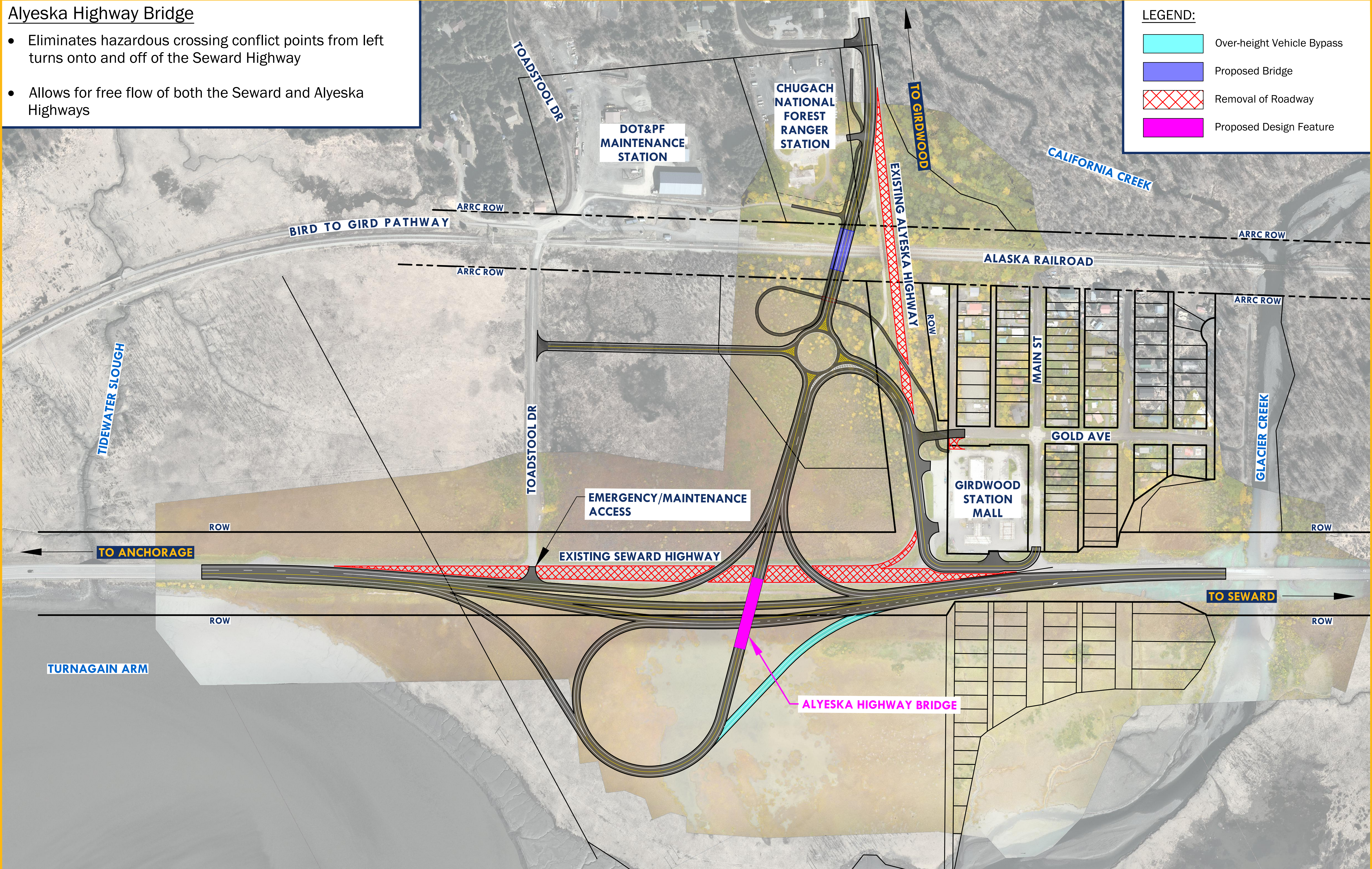


Alyeska Highway Bridge

- Eliminates hazardous crossing conflict points from left turns onto and off of the Seward Highway
- Allows for free flow of both the Seward and Alyeska Highways

LEGEND:

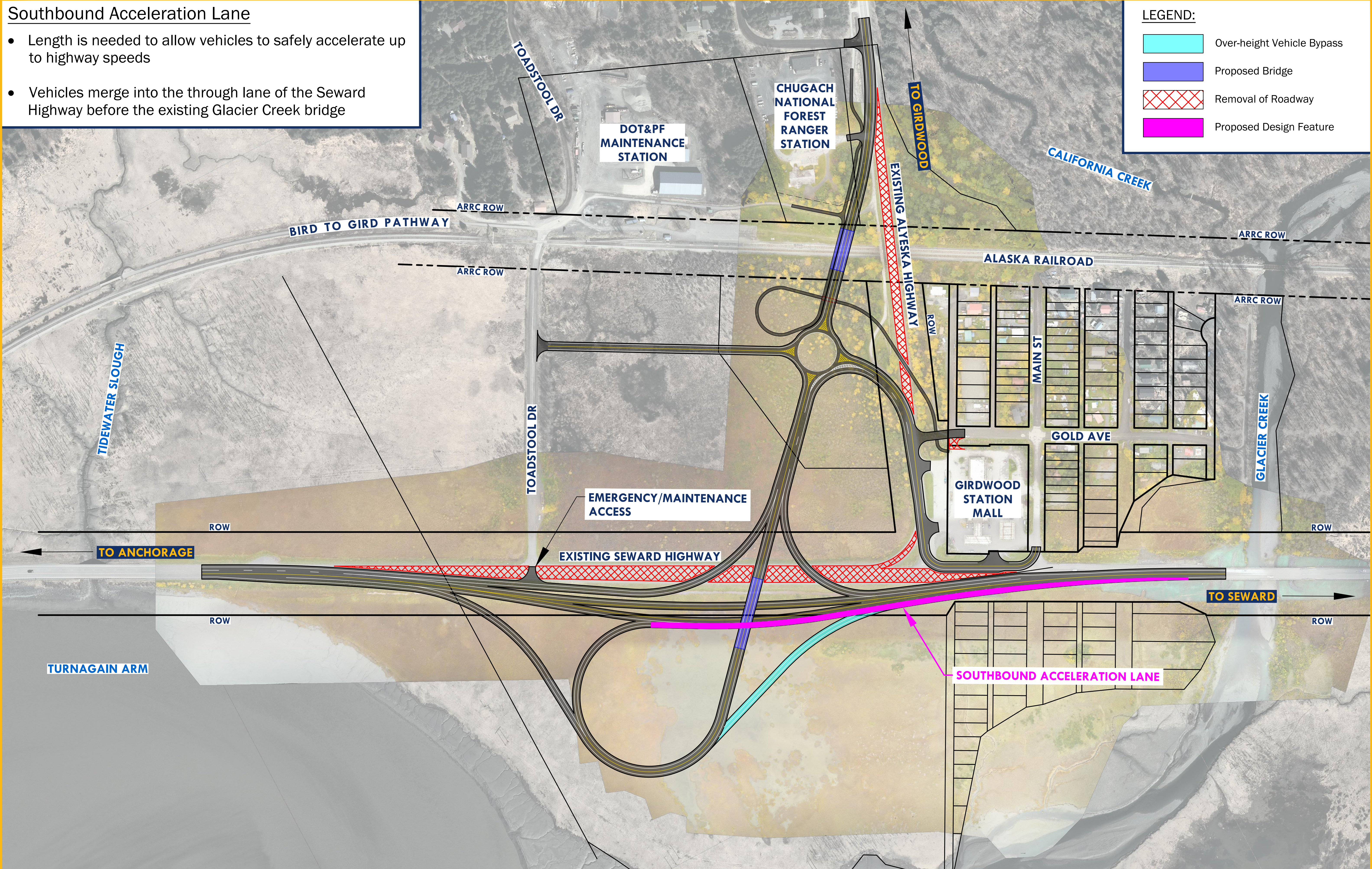
	Over-height Vehicle Bypass
	Proposed Bridge
	Removal of Roadway
	Proposed Design Feature



- Southbound Acceleration Lane
- Length is needed to allow vehicles to safely accelerate up to highway speeds
 - Vehicles merge into the through lane of the Seward Highway before the existing Glacier Creek bridge

LEGEND:

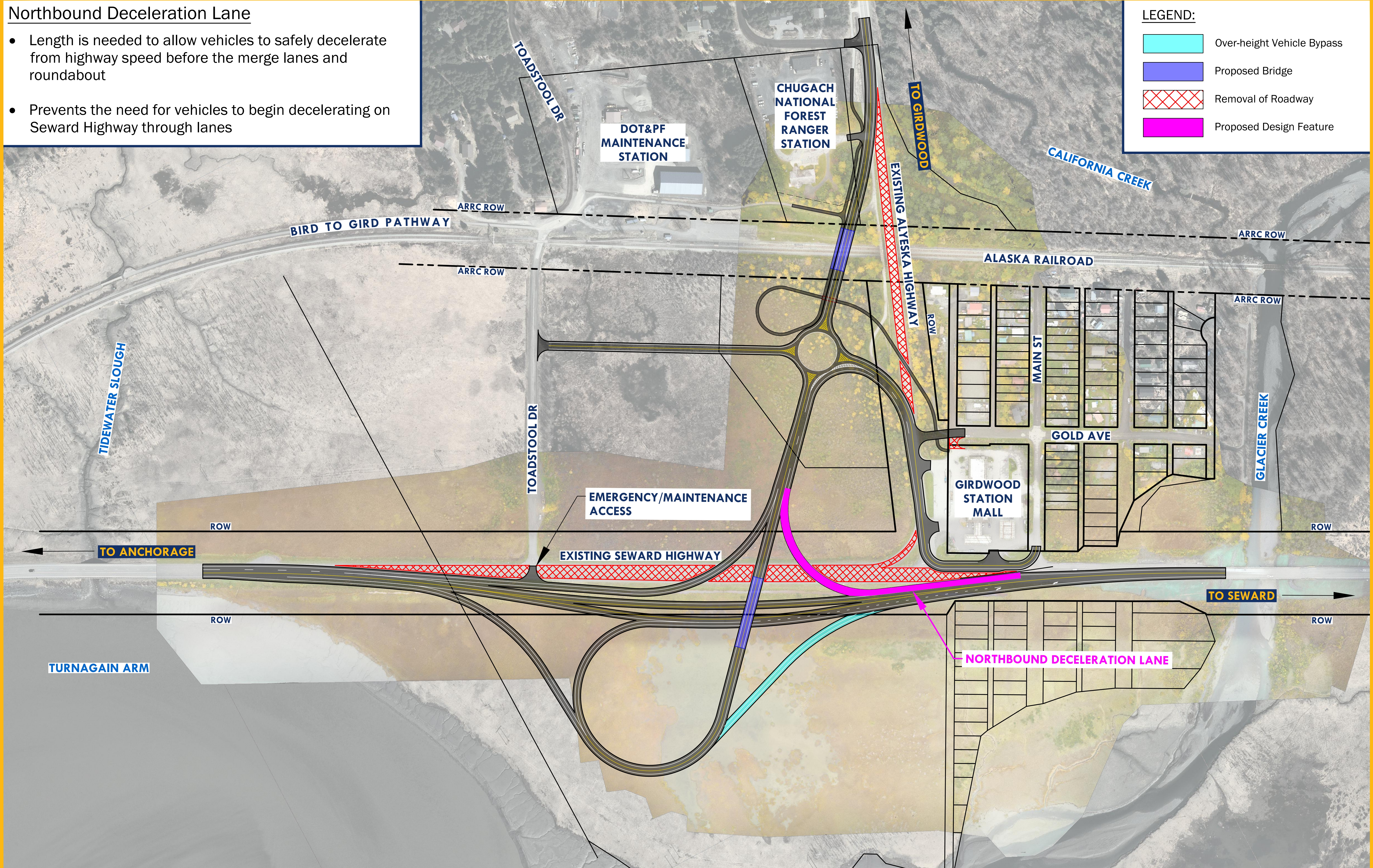
<div></div>	Over-height Vehicle Bypass
<div></div>	Proposed Bridge
<div></div>	Removal of Roadway
<div></div>	Proposed Design Feature



Northbound Deceleration Lane

- Length is needed to allow vehicles to safely decelerate from highway speed before the merge lanes and roundabout
- Prevents the need for vehicles to begin decelerating on Seward Highway through lanes

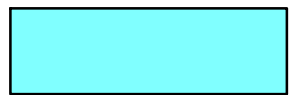



-

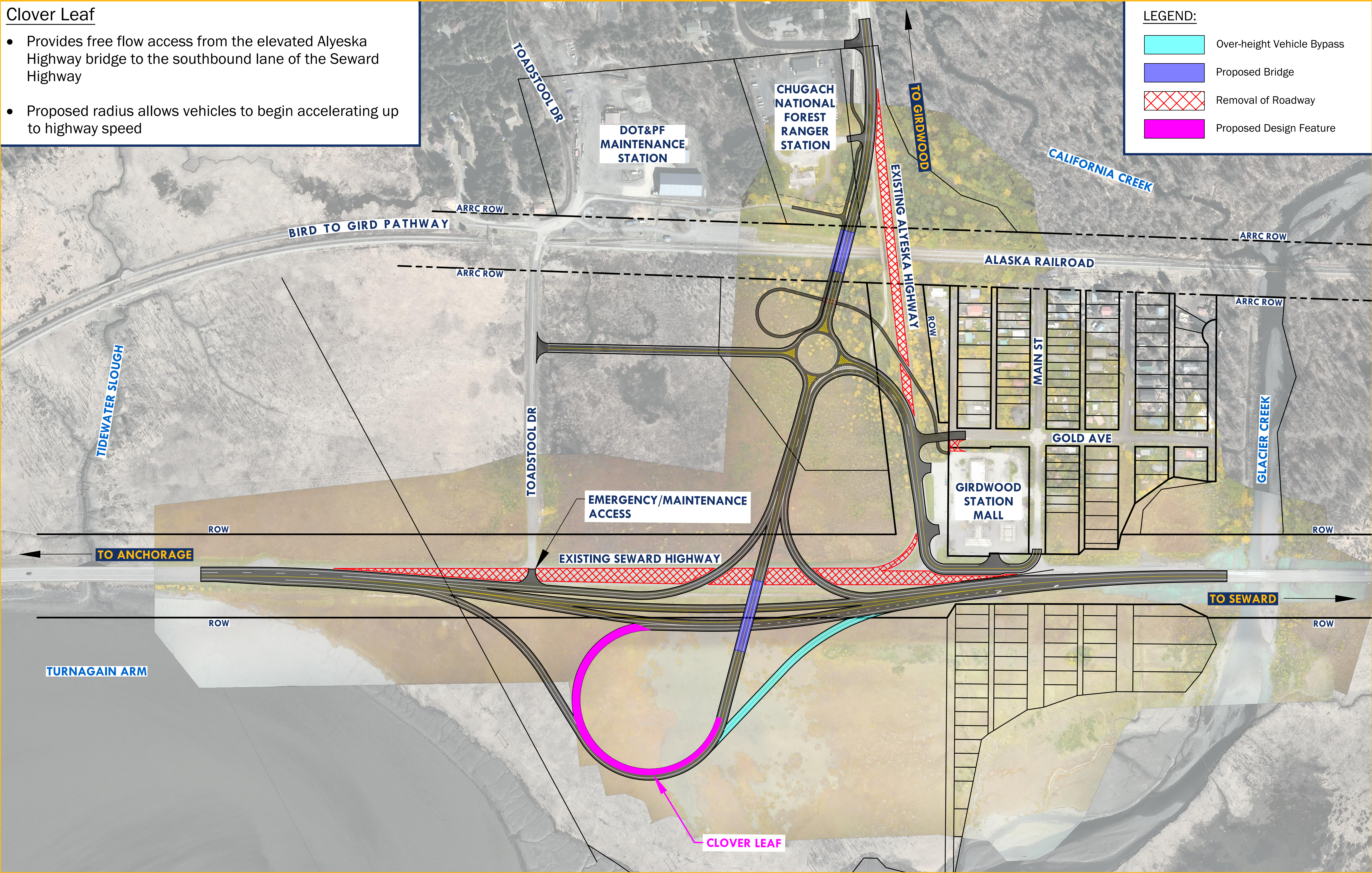


Clover Leaf

- Provides free flow access from the elevated Alyeska Highway bridge to the southbound lane of the Seward Highway
- Proposed radius allows vehicles to begin accelerating up to highway speed

LEGEND:

	Over-height Vehicle Bypass
	Proposed Bridge
	Removal of Roadway
	Proposed Design Feature

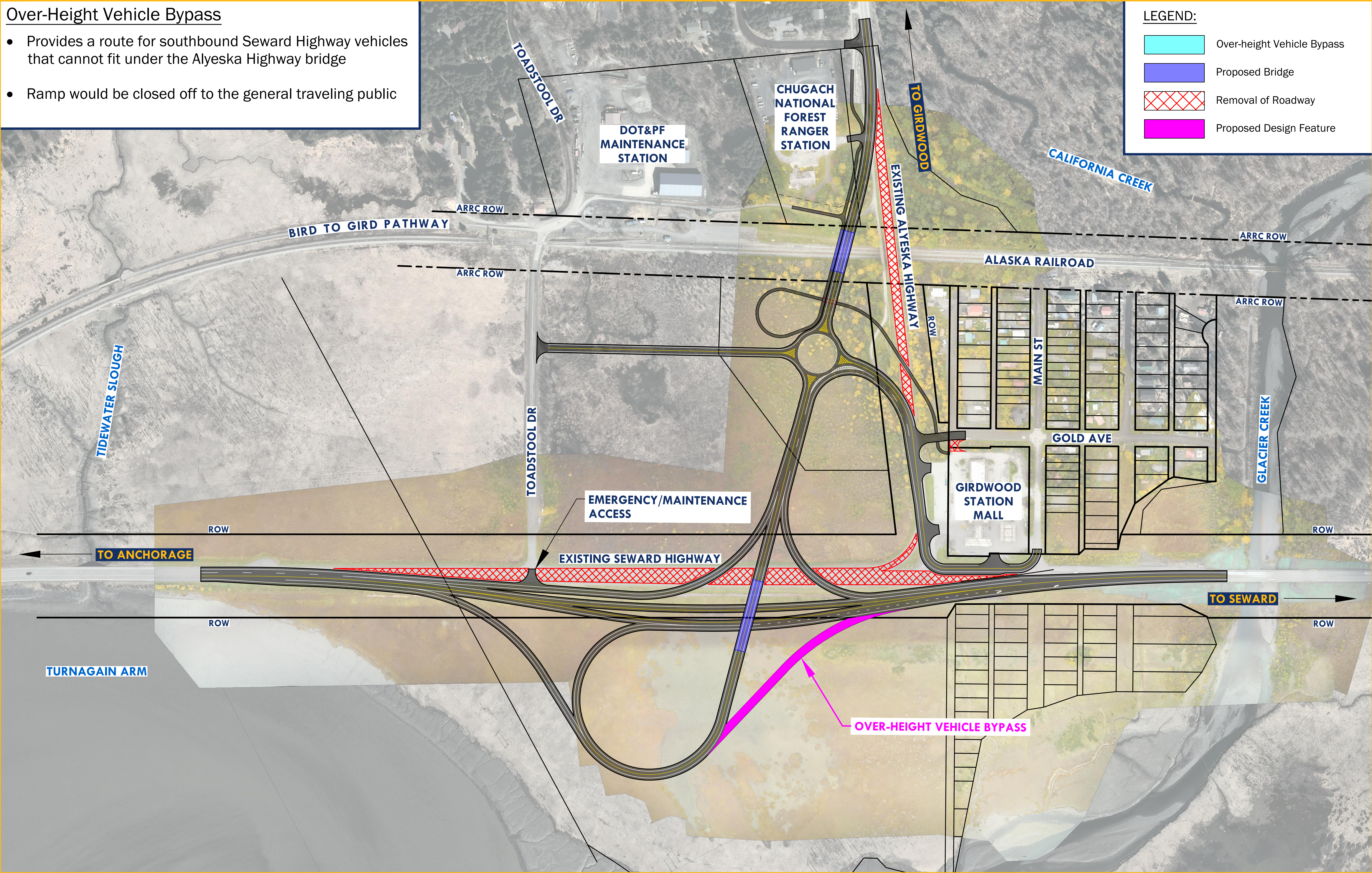


Over-Height Vehicle Bypass

- Provides a route for southbound Seward Highway vehicles that cannot fit under the Alyeska Highway bridge
- Ramp would be closed off to the general traveling public

LEGEND:

<div></div>	Over-height Vehicle Bypass
<div></div>	Proposed Bridge
<div></div>	Removal of Roadway
<div></div>	Proposed Design Feature

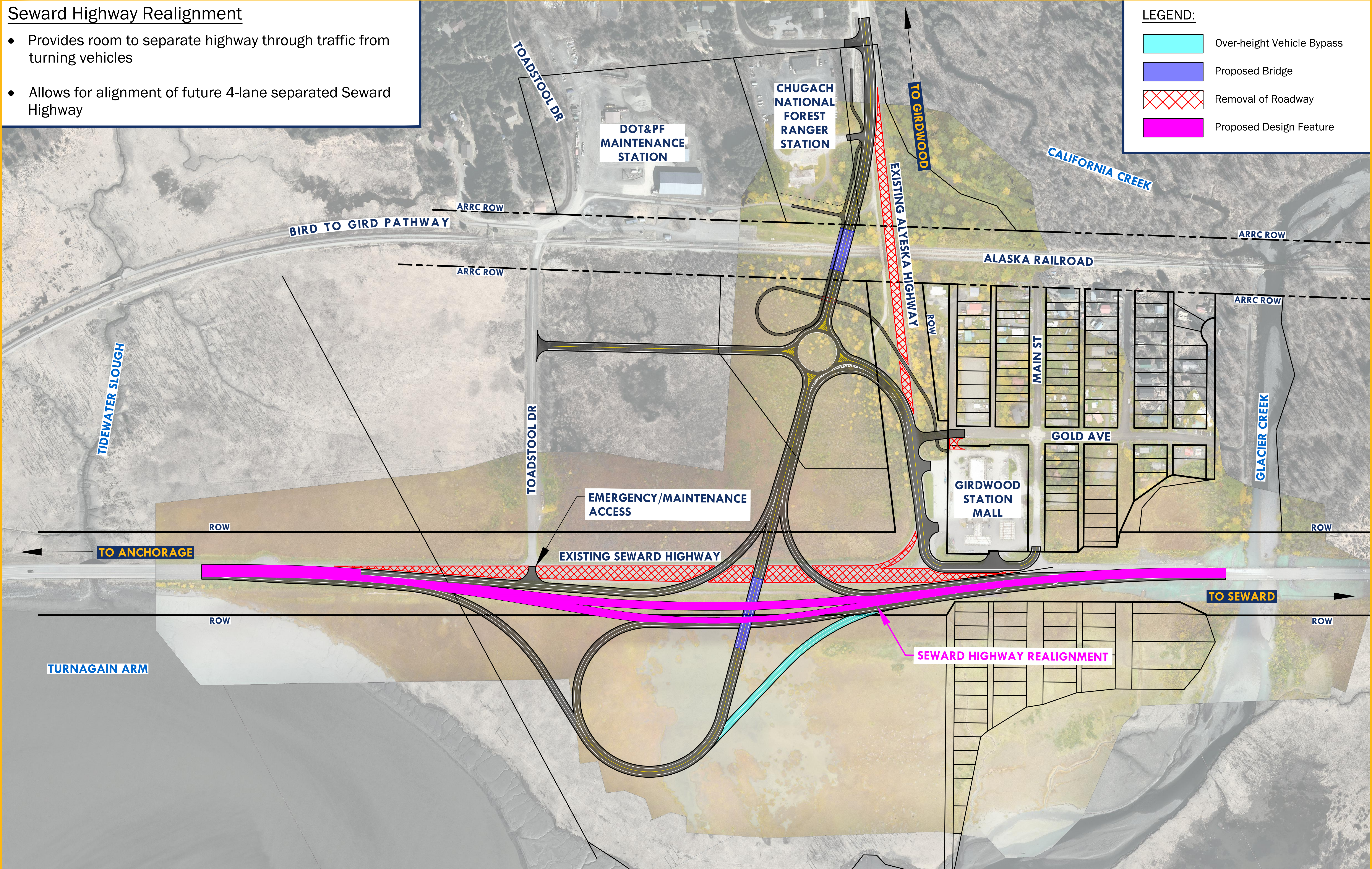


Seward Highway Realignment

- Provides room to separate highway through traffic from turning vehicles
- Allows for alignment of future 4-lane separated Seward Highway

LEGEND:

<div></div>	Over-height Vehicle Bypass
<div></div>	Proposed Bridge
<div></div>	Removal of Roadway
<div></div>	Proposed Design Feature



Alyeska Highway Merge Lanes

- Provides adequate distance for vehicles to merge into the correct lane before the roundabout

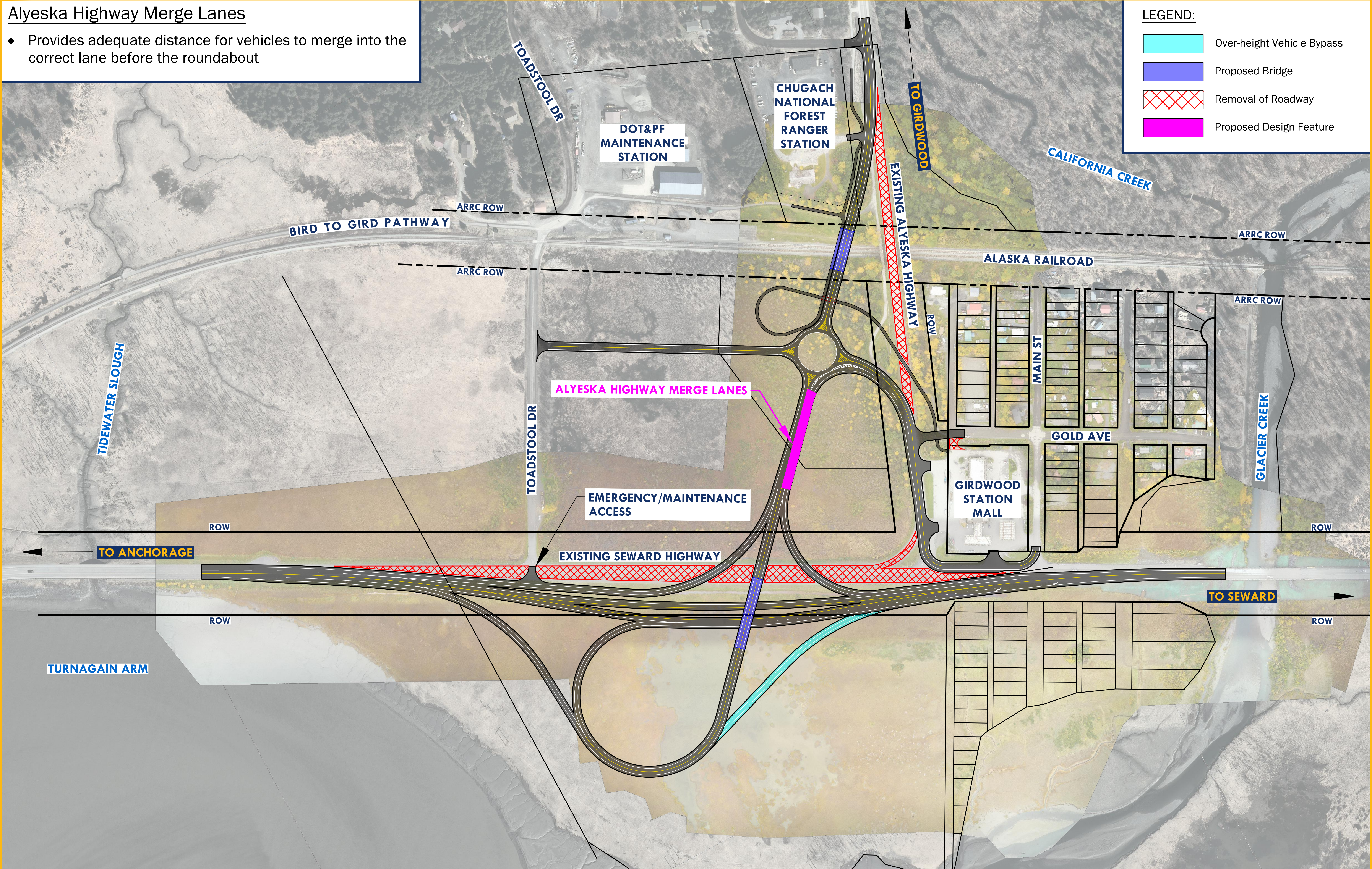
LEGEND:

Over-height Vehicle Bypass

Proposed Bridge

Removal of Roadway

Proposed Design Feature

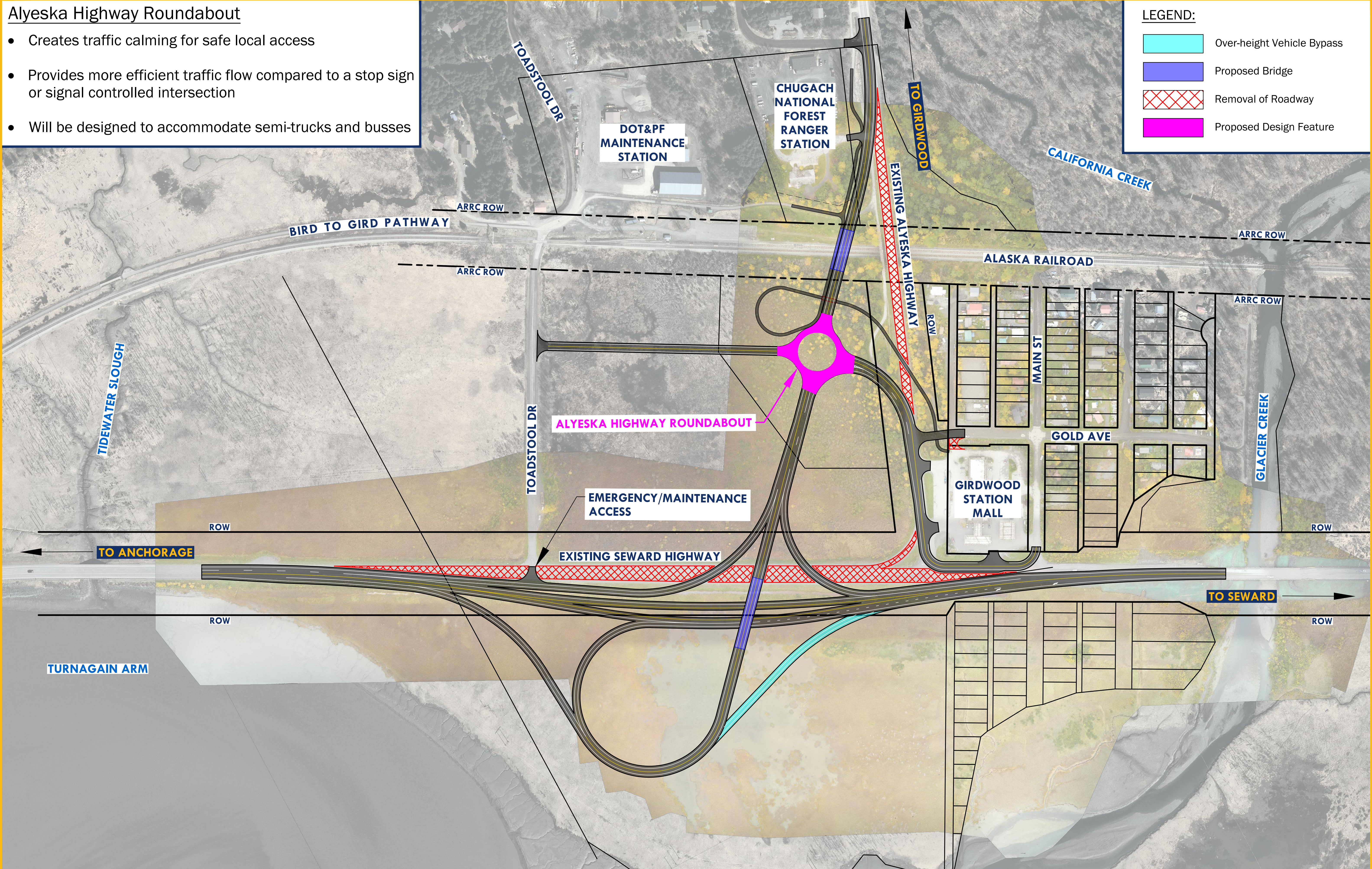


Alyeska Highway Roundabout

- Creates traffic calming for safe local access
- Provides more efficient traffic flow compared to a stop sign or signal controlled intersection
- Will be designed to accommodate semi-trucks and busses

LEGEND:

<div></div>	Over-height Vehicle Bypass
<div></div>	Proposed Bridge
<div></div>	Removal of Roadway
<div></div>	Proposed Design Feature

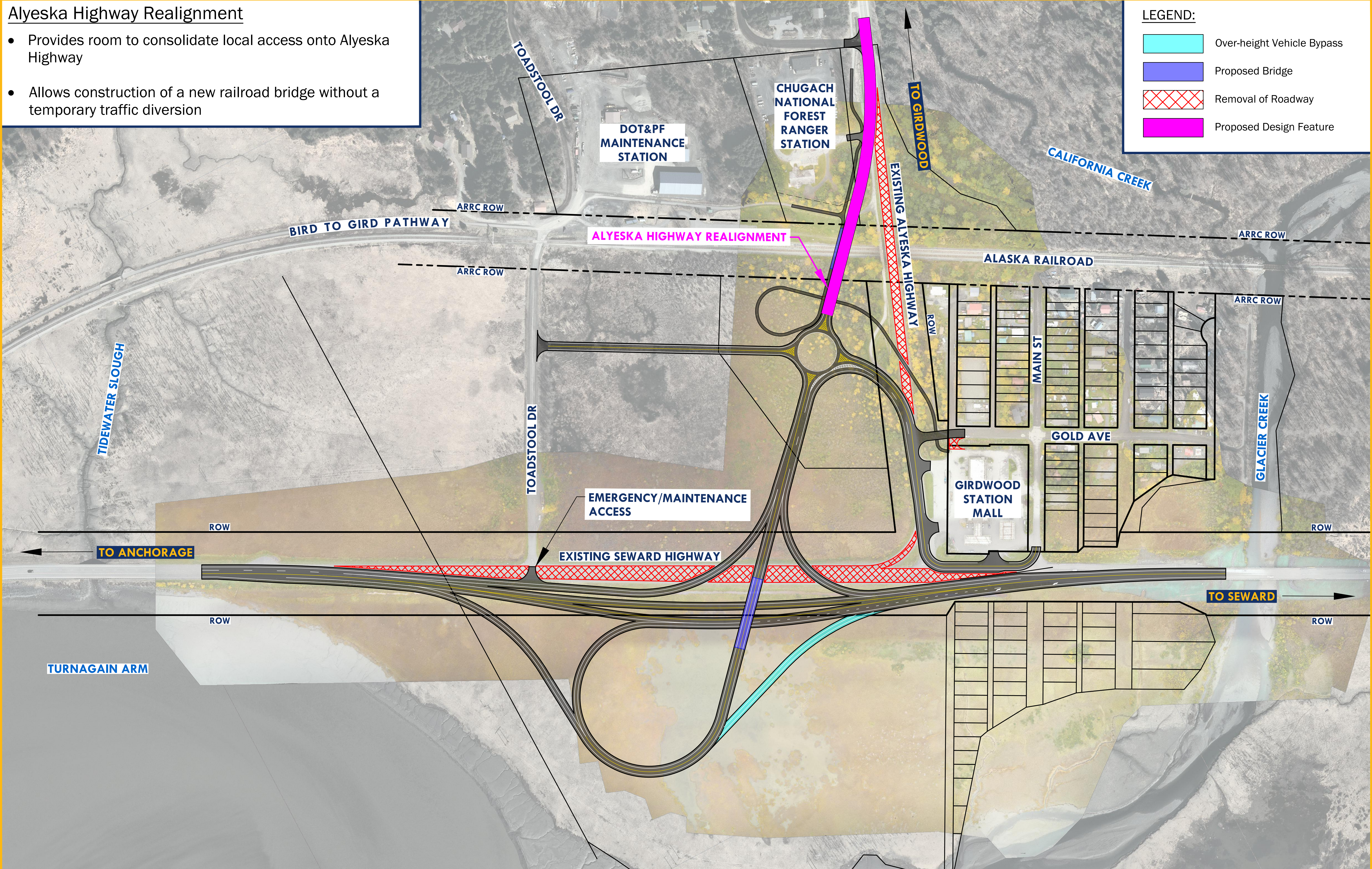


Alyeska Highway Realignment

- Provides room to consolidate local access onto Alyeska Highway
- Allows construction of a new railroad bridge without a temporary traffic diversion

LEGEND:

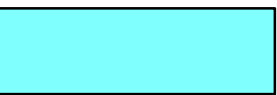

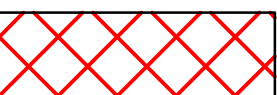

<div></div>	Over-height Vehicle Bypass
<div></div>	Proposed Bridge
<div></div>	Removal of Roadway
<div></div>	Proposed Design Feature

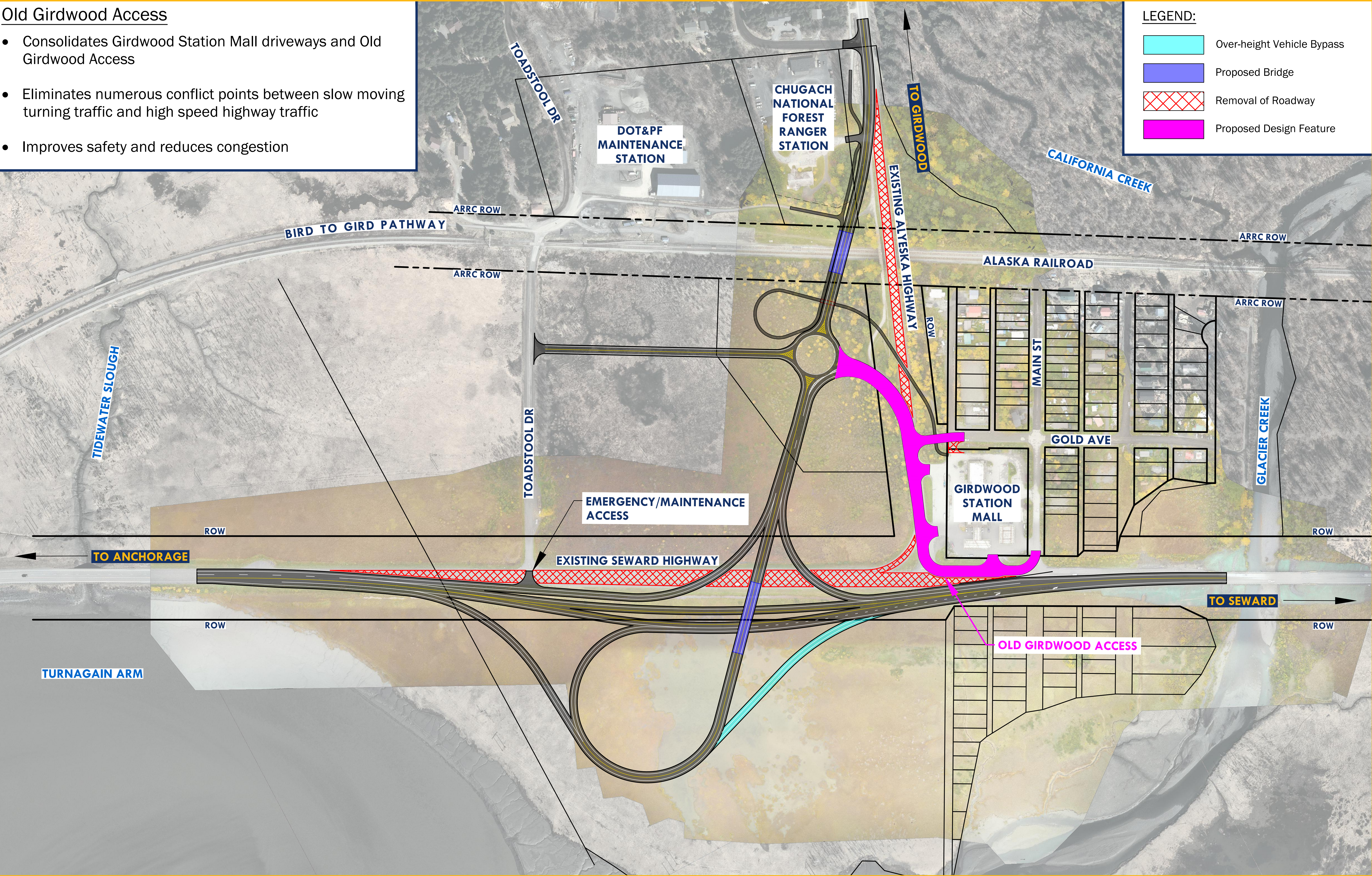


Old Girdwood Access

- Consolidates Girdwood Station Mall driveways and Old Girdwood Access
- Eliminates numerous conflict points between slow moving turning traffic and high speed highway traffic
- Improves safety and reduces congestion

LEGEND:

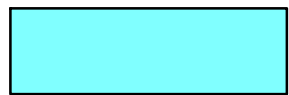



	Over-height Vehicle Bypass
	Proposed Bridge
	Removal of Roadway
	Proposed Design Feature



Toadstool Drive Access

- Primary access between Toadstool Drive onto Alyeska Highway
- Direct access onto the Seward Highway from Toadstool Drive will be reserved for emergency and maintenance vehicles

LEGEND:

	Over-height Vehicle Bypass
	Proposed Bridge
	Removal of Roadway
	Proposed Design Feature

